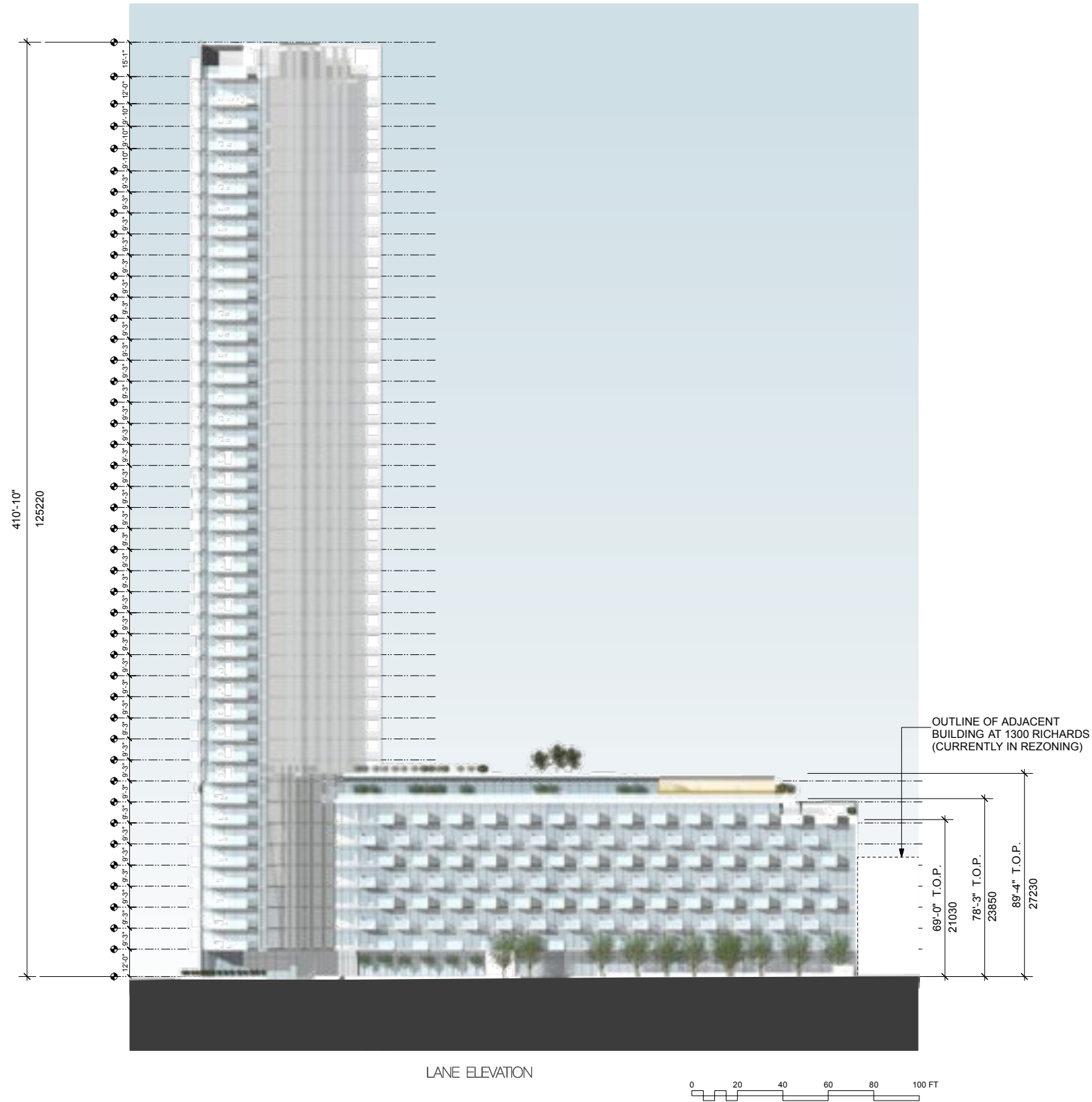
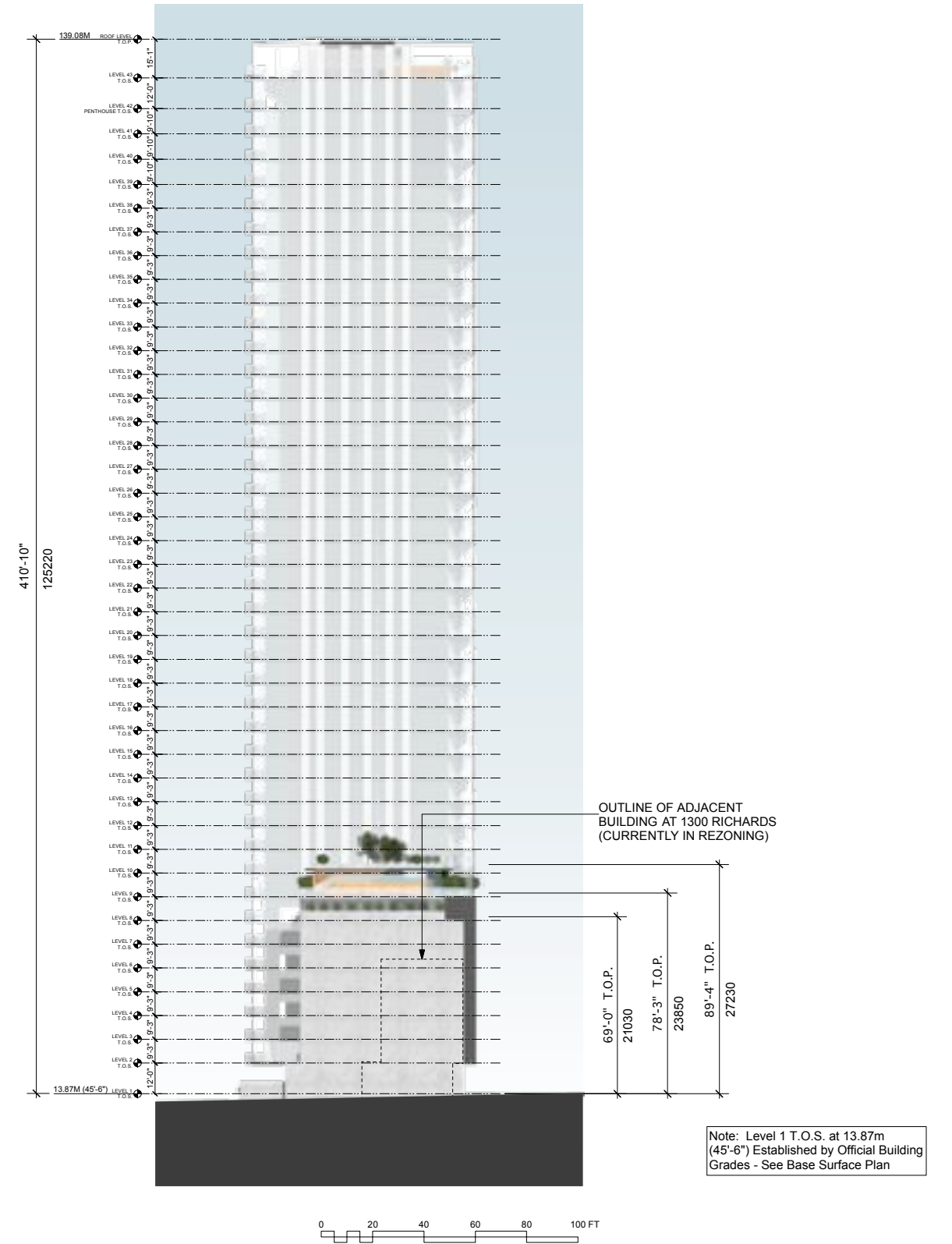


# 03. RENDERED ELEVATIONS

## NORTHEAST ELEVATION



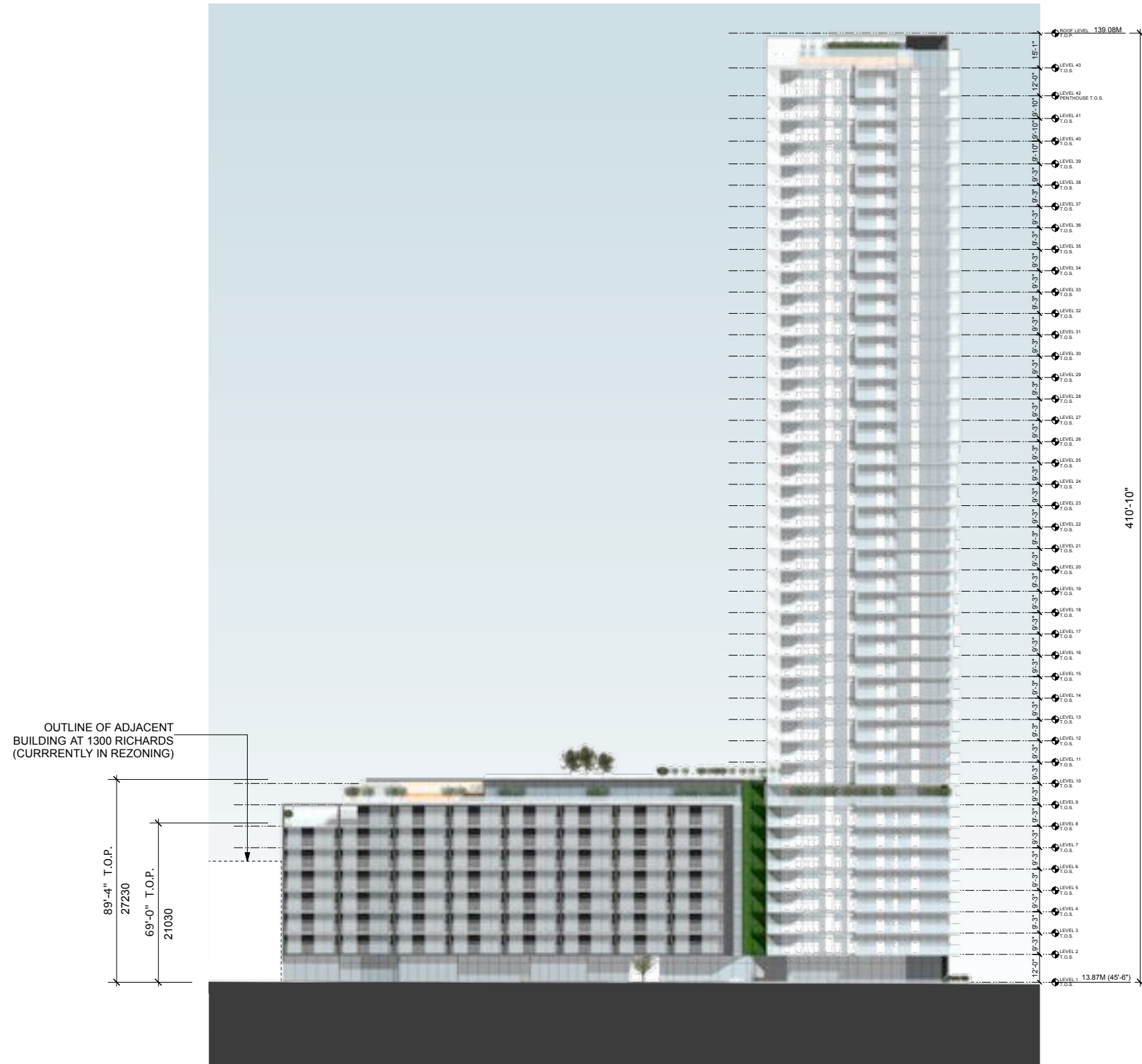
## SOUTHEAST ELEVATION



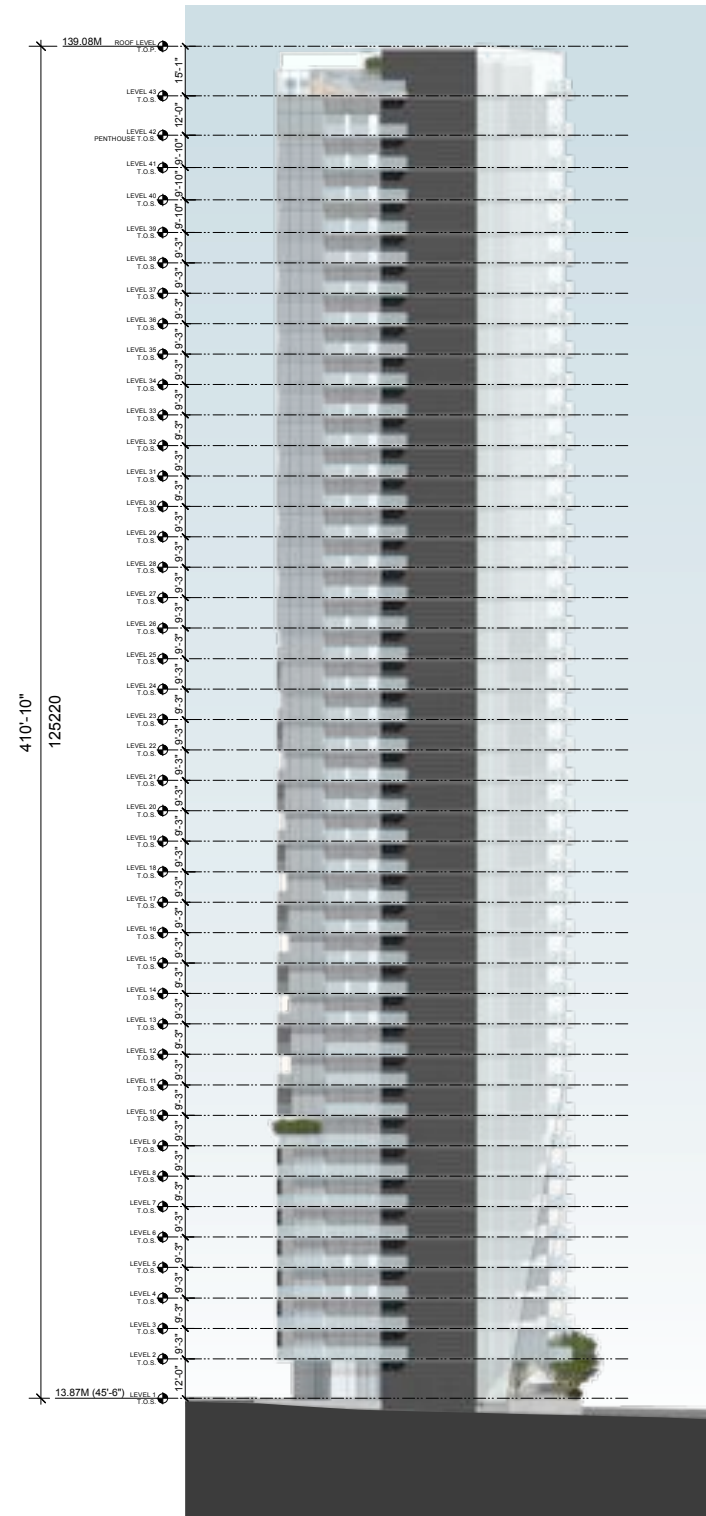
# 03. RENDERED ELEVATIONS

## NORTHWEST ELEVATION

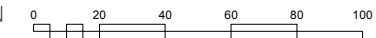
## SOUTHWEST ELEVATION



RICHARDS ELEVATION



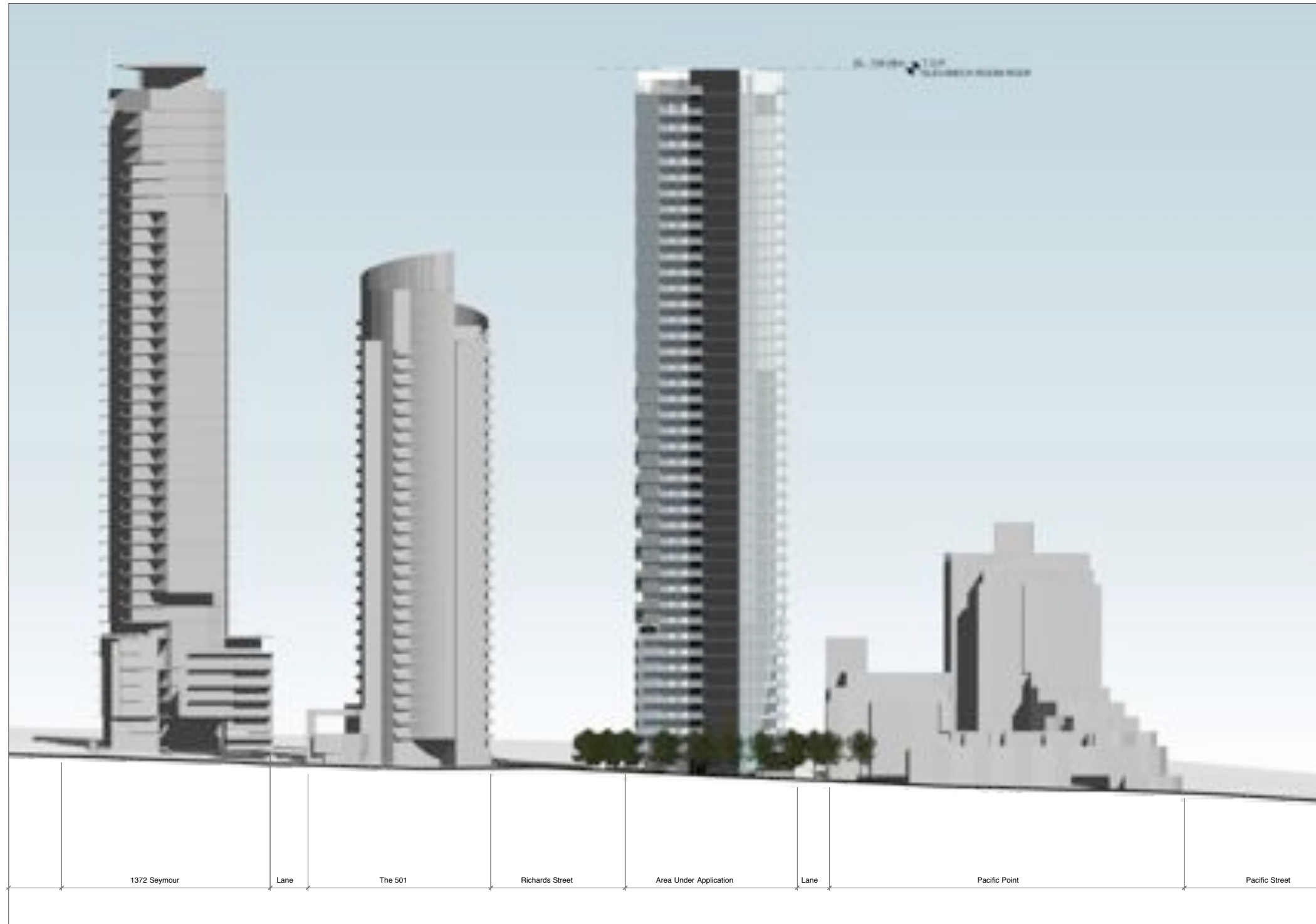
PACIFIC ELEVATION



Note: Level 1 T.O.S. at 13.87m (45'-6") Established by Official Building Grades - See Base Surface Plan



02. DESIGN RATIONALE  
STREET ELEVATIONS 01



PACIFIC STREET ELEVATION



02. DESIGN RATIONALE  
STREET ELEVATIONS 02



RICHARDS STREET ELEVATION

