

plan types

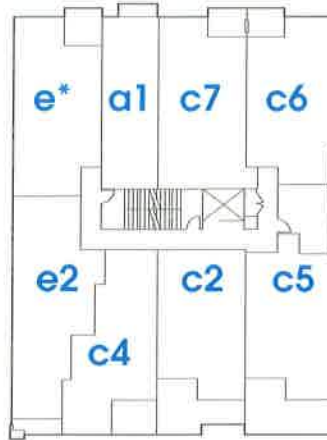
a plans studio

b plans 1 bedroom

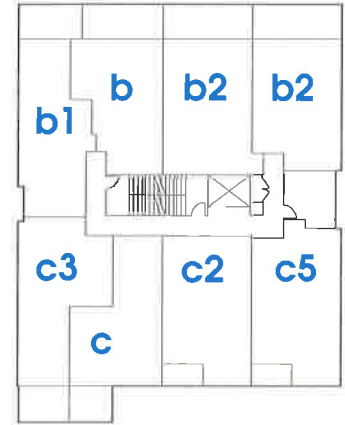
c plans 1 bedroom + flex

e plans 2 bedroom + flex

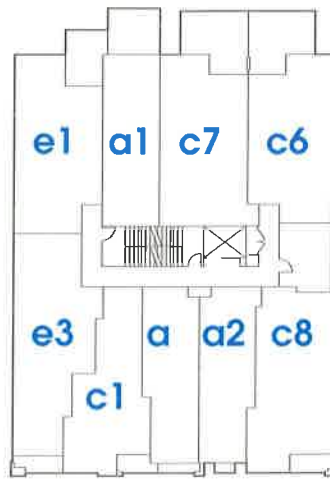
site plan



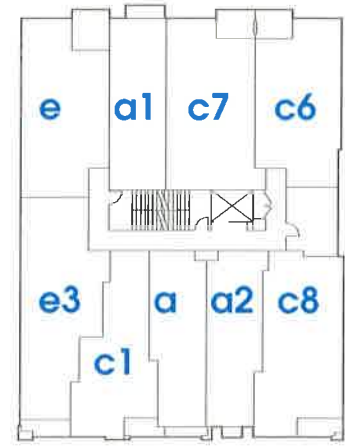
level 7



level 8



level 2



level 3-6

plan type

floorplan

a

studio

approx 491 sq ft

south facing

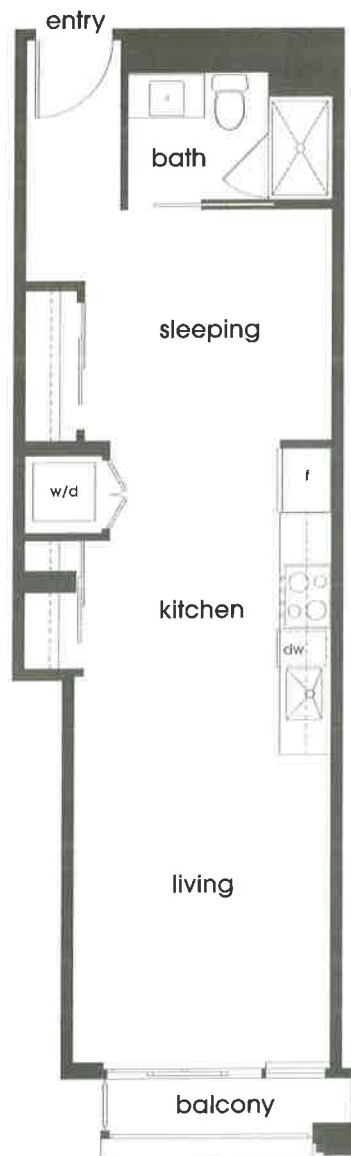
keyplates



level 2



level 3-6



plan type

floorplan

a1

studio

approx 487 sq ft

north facing

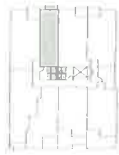
keyplates



level 2



level 3-6



level 7



plan type

floorplan

a2

studio

approx 503 sq ft

south facing

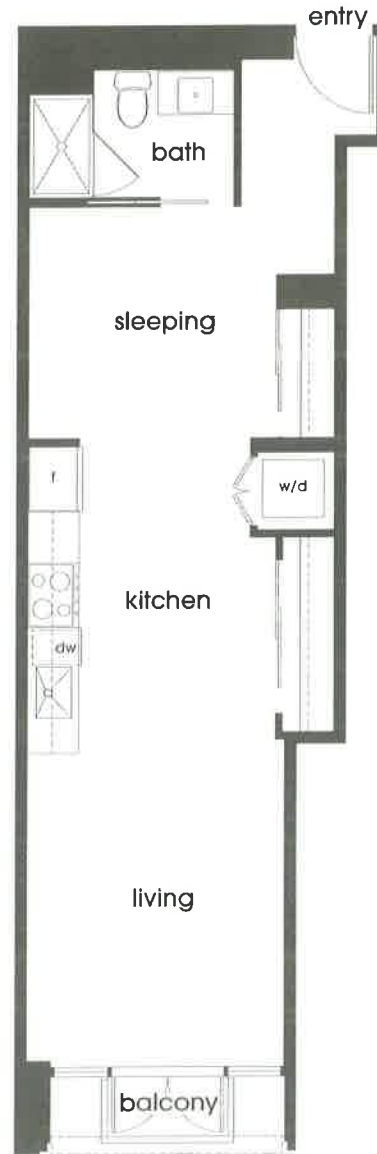
keyplates



level 2



level 3-6



plan type

floorplan

b

1 bedroom

approx 544 sq ft

north facing

keyplates



level 8



plan type

b1

1 bedroom

approx 601 sq ft

northwest facing

keyplates



level 8

floorplan



plan type

floorplan

b2

1 bedroom

approx 579-621 sq ft

north facing

keyplates



level 8



*802 is reverse plan

plan type

floorplan



1 bedroom + flex

approx 580 sq ft

south facing

keyplates



level 8



plan type

floorplan

C1

1 bedroom + flex

approx 596 sq ft

south facing

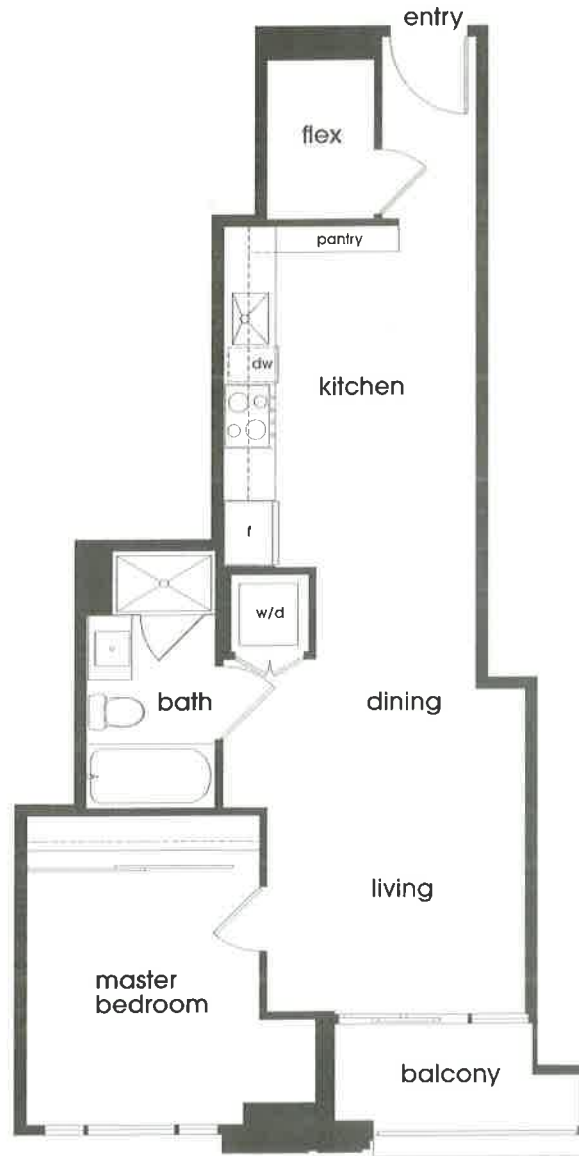
keyplates



level 2



level 3-6



FRAMEWORK

2 3 1 P E N D E R



plan type

floorplan

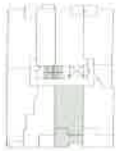
C2

1 bedroom + flex

approx 652 sq ft

south facing

keyplates



level 7



level 8



FRAMEWORK

2 3 1 P E N D E R



plan type

C3

1 bedroom + flex

approx 649 sq ft

southwest facing

keyplates



level 8

floorplan



plan type

floorplan

C4

1 bedroom + flex

approx 660 sq ft

south facing

keyplates



level 7



plan type

floorplan

C5

1 bedroom + flex

approx 660-678 sq ft

south facing

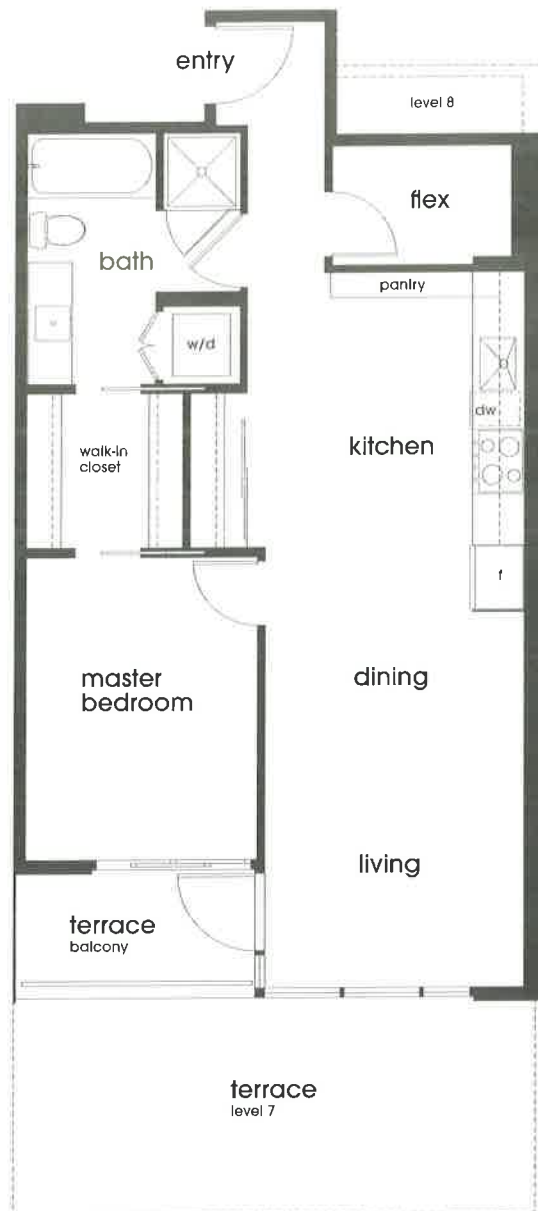
keyplates



level 7



level 8



plan type

floorplan

c6/7

1 bedroom + flex

approx 709-750 sq ft

north facing

keyplates



level 2



level 3-6



level 7



*c6 is reverse plan

FRAMEWORK

2 3 1 P E N D E R



plan type

floorplan

C8

1 bedroom + flex

approx 752 sq ft

south facing

keyplates



level 2



level 3-6



FRAMEWORK

2 3 1 P E N D E R



plan type

floorplan

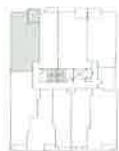


2 bedroom + flex

approx 791 sq ft

northwest facing

keyplates



level 3-6



FRAMEWORK

2 3 1 P E N D E R



plan type

floorplan



2 bedroom + flex

approx 791 sq ft

northwest facing

keyplates



level 7





plan type

floorplan

e1

2 bedroom + flex

approx 791 sq ft

northwest facing

keyplates



level 2



plan type

floorplan

e2

2 bedroom + flex

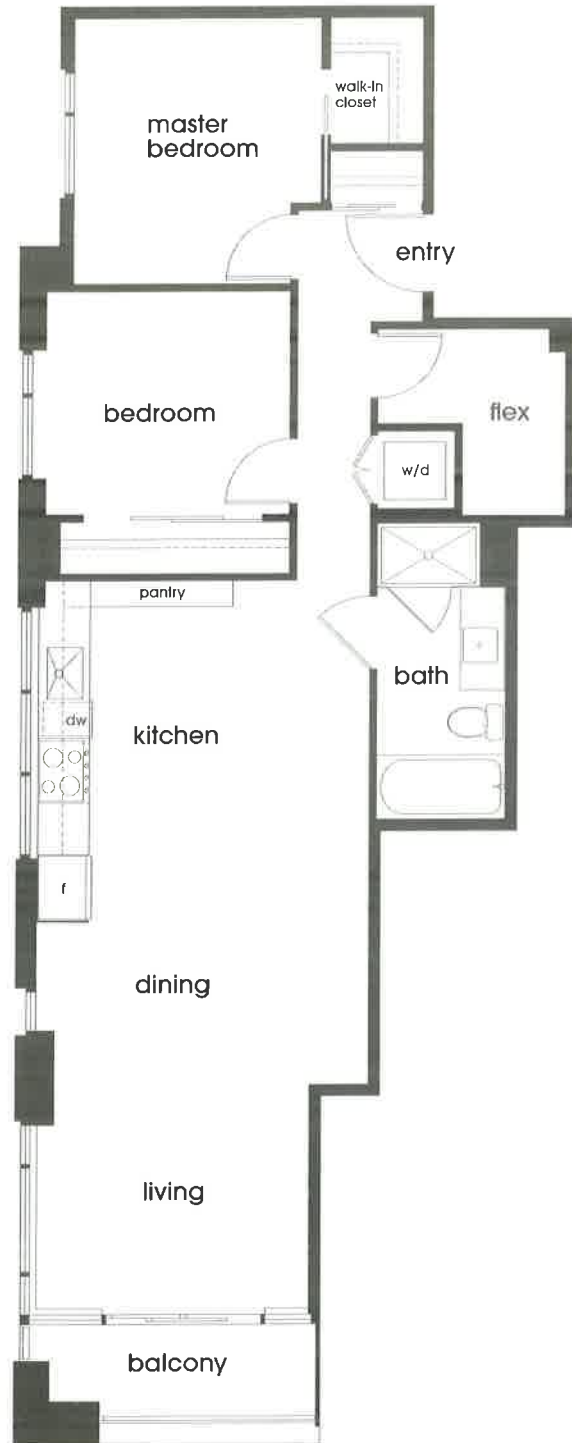
approx 819 sq ft

southwest facing

keyplates



level 7



plan type

floorplan

e3

2 bedroom + flex

approx 834 sq ft

southwest facing

keyplates



level 2



level 3-6

