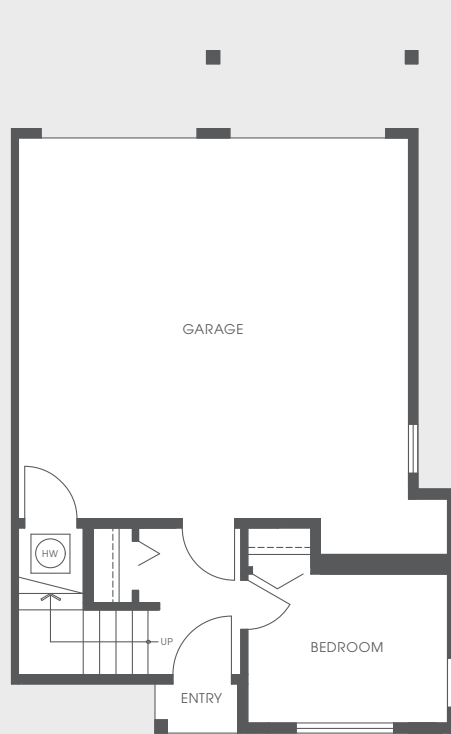
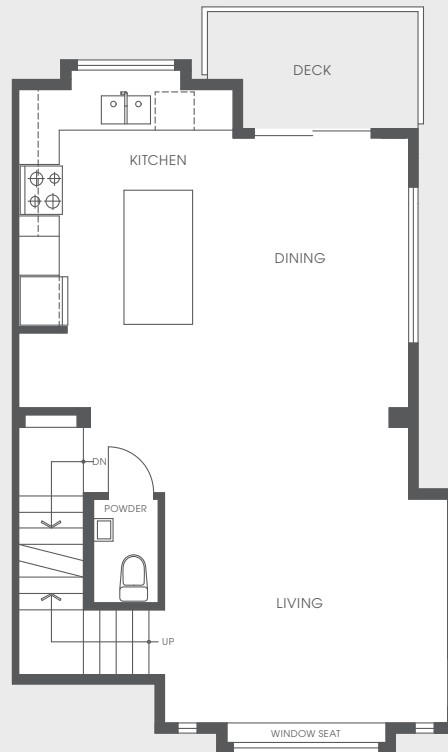


THE MARINER SERIES | PLAN H

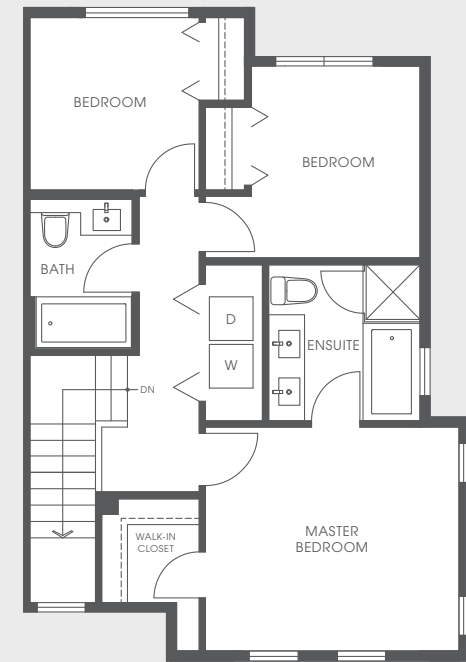
4 BEDROOM | 2.5 BATH | 1,499 – 1,516 SQ.FT. (APPROX.)



LOWER



MAIN



UPPER

THE DEVELOPER RESERVES THE RIGHT TO MAKE MODIFICATIONS OR SUBSTITUTIONS SHOULD THEY BE NECESSARY. ANY MEASUREMENTS PROVIDED ARE APPROXIMATE ONLY. THE QUALITY RESIDENCES AT FAIRWINDS ARE BUILT BY POLYGON FAIRWINDS HOMES LTD. 08/23/16