



TORINO

PINNACLE LIVING
at CAPSTAN VILLAGE

SUITES

- *306
- *509
- 609
- 709
- 809
- 909
- 1008
- 1103

2 BED

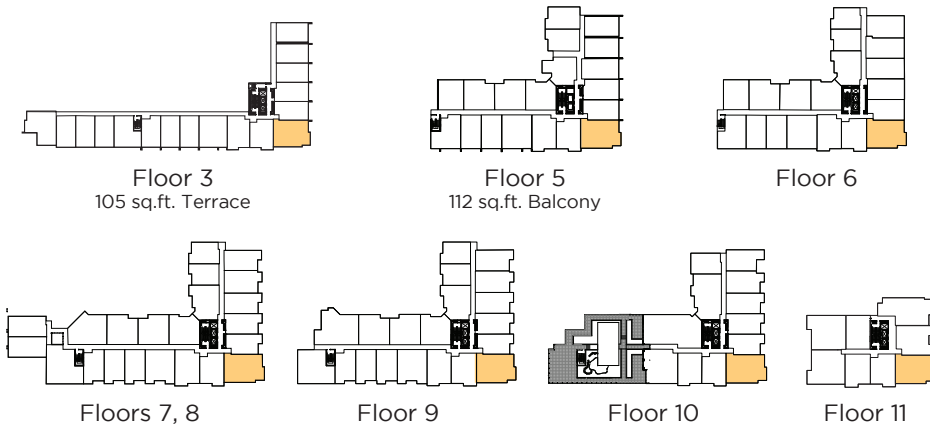
Suite Area: 1,028 sq.ft.

Balcony Area: 116 sq.ft.

Total Area: 1,144 sq.ft.



TORINO SOUTH



HAZELBRIDGE WAY

In the interest of product improvement and maintaining the high standard of these homes, the developer reserves the right to make modifications and changes to plans, specifications and features. Sizes and dimensions are approximate and may vary with actual strata plan and survey.