



PARK RESIDENCES II

TOWER D

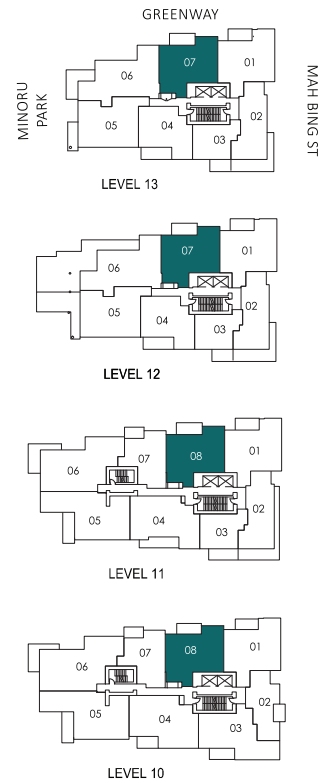
PLAN

B4

2 BEDROOM + DEN + 2 BATH

INTERIOR 995 SF EXTERIOR 93 - 107 SF

TOTAL 1088 - 1102 SF



Actual site interiors, exteriors, views and amenities may be noticeably different than depicted in photographs, illustrations, websites, renderings and models. The developer reserves the right to make modifications and substitutions, and to change brands, sizes, areas, colours, layouts, materials, ceiling heights, features and other specifications, all without prior notification. Furniture, furnishings, window treatments and other decorations and design features may not be included. Such matters are governed by the applicable contract of purchase and sale and the disclosure statement. This is not an offering for sale. Such an offering may only be made after filing a disclosure statement.



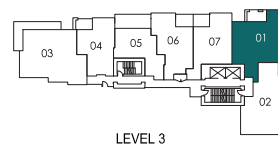
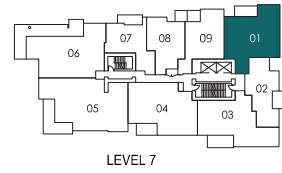
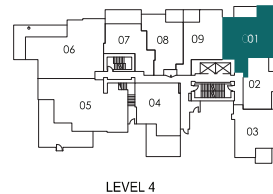
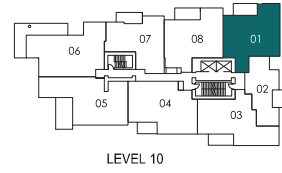
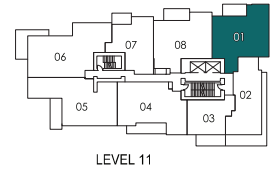
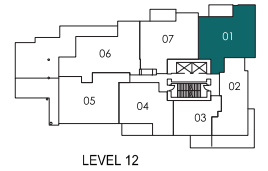
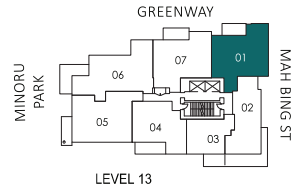
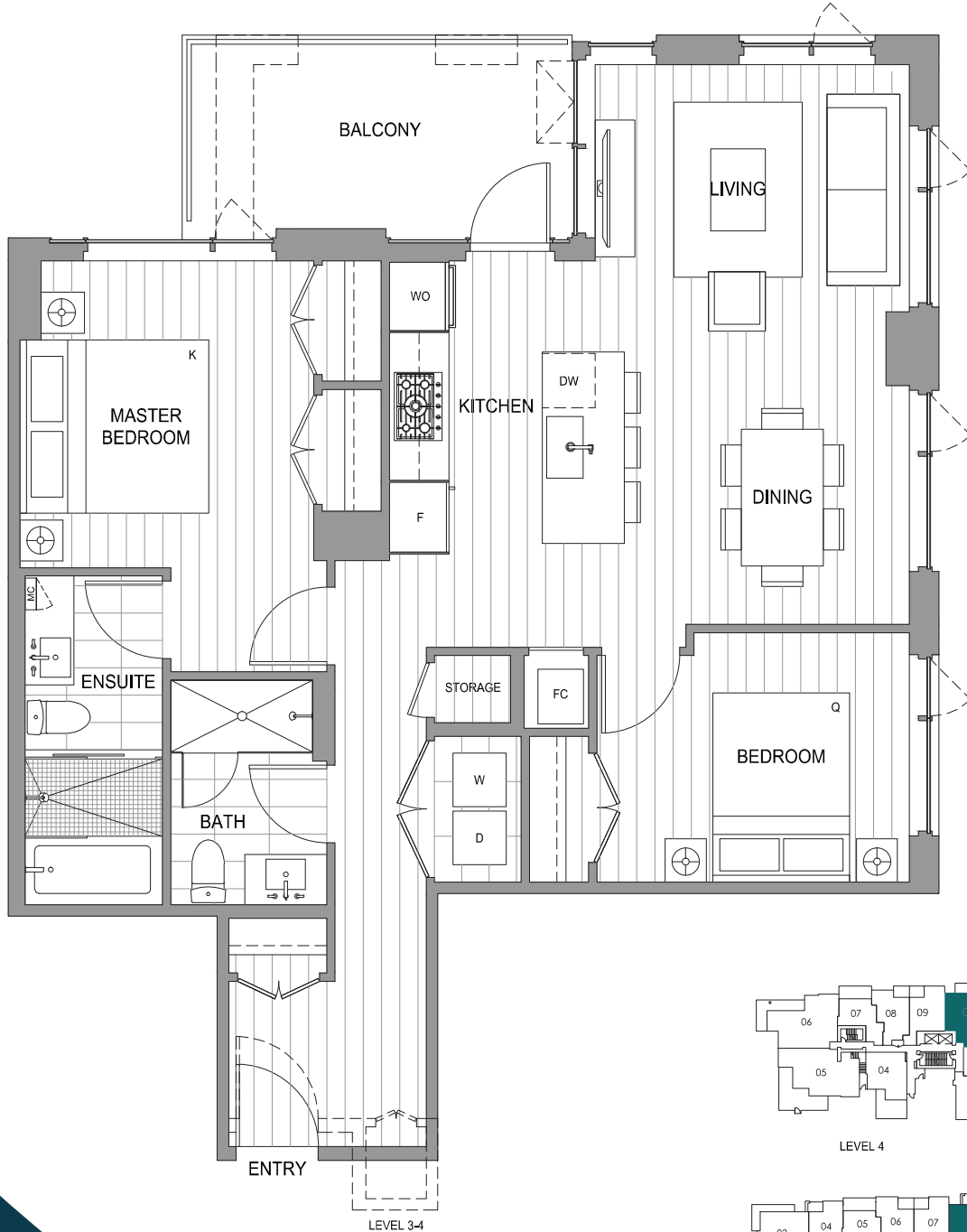
PARK RESIDENCES II

TOWER D

PLAN B5

2 BEDROOM + 2 BATH

INTERIOR 1023 - 1028 SF EXTERIOR 80 - 105 SF
TOTAL 1106 - 1133 SF



Actual suite interiors, exteriors, views and amenities may be noticeably different than depicted in photographs, illustrations, websites, renderings and models. The developer reserves the right to make modifications and substitutions, and to change brands, sizes, areas, colours, layouts, materials, ceiling heights, features and other specifications, all without prior notification. Furniture, furnishings, window treatments and other decorations and design features may not be included. Such matters are governed by the applicable contract of purchase and sale and the disclosure statement. This is not an offering for sale. Such an offering may only be made after filing a disclosure statement.



PARK RESIDENCES II

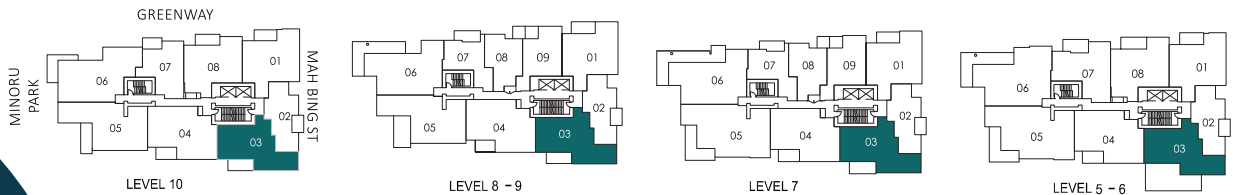
TOWER D

PLAN

B6

2 BEDROOM + 2 BATH

INTERIOR 1035 SF EXTERIOR 101 - 459 SF
TOTAL 1136 - 1494 SF



Actual suite interiors, exteriors, views and amenities may be noticeably different than depicted in photographs, illustrations, websites, renderings and models. The developer reserves the right to make modifications and substitutions, and to change brands, sizes, areas, colours, layouts, materials, ceiling heights, features and other specifications, all without prior notification. Furniture, furnishings, window treatments and other decorations and design features may not be included. Such matters are governed by the applicable contract of purchase and sale and the disclosure statement. This is not an offering for sale. Such an offering may only be made after filing a disclosure statement.



PARK RESIDENCES II

TOWER D

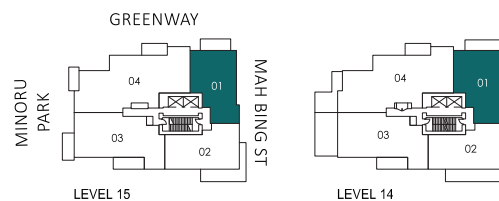
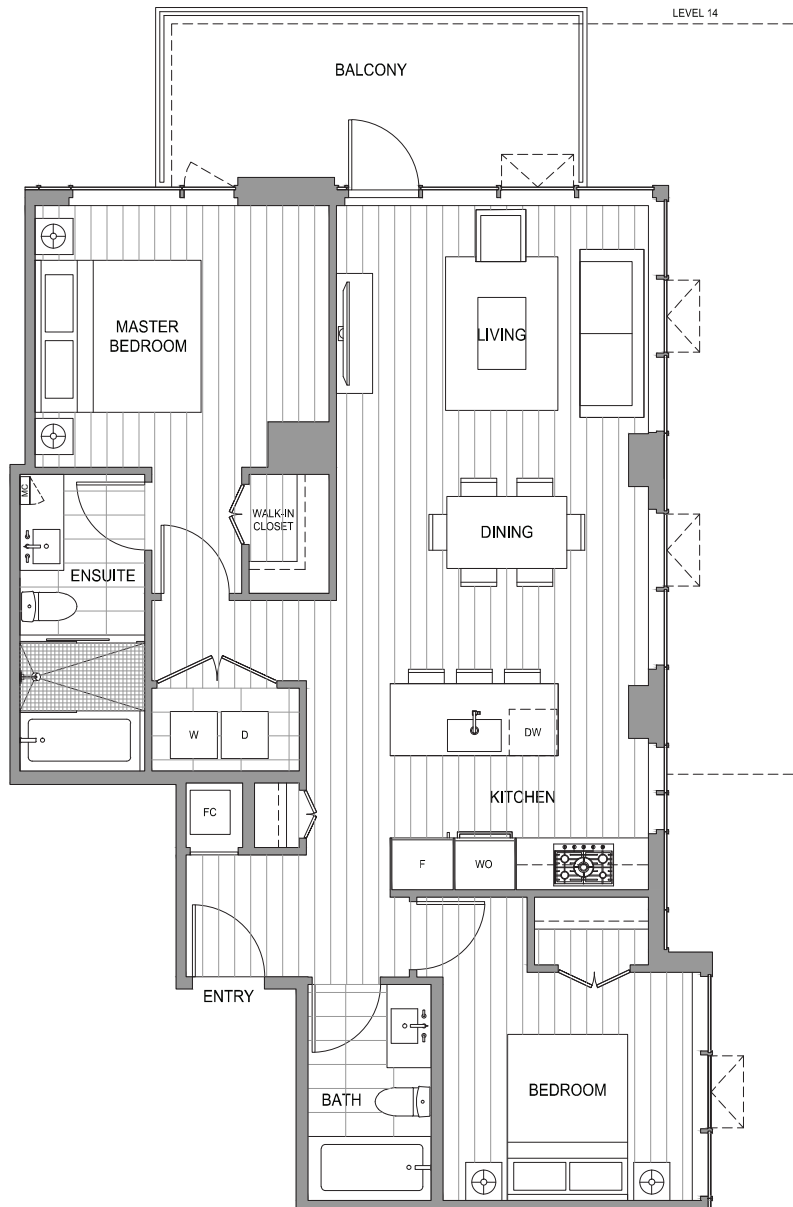
PLAN

2 BEDROOM + 2 BATH

B7

INTERIOR 1035 SF EXTERIOR 133 - 316 SF

TOTAL 1168 - 1351 SF



Actual suite interiors, exteriors, views and amenities may be noticeably different than depicted in photographs, illustrations, websites, renderings and models. The developer reserves the right to make modifications and substitutions, and to change brands, sizes, areas, colours, layouts, materials, ceiling heights, features and other specifications, all without prior notification. Furniture, furnishings, window treatments and other decorations and design features may not be included. Such matters are governed by the applicable contract of purchase and sale and the disclosure statement. This is not an offering for sale. Such an offering may only be made after filing a disclosure statement.



PARK RESIDENCES II

TOWER D

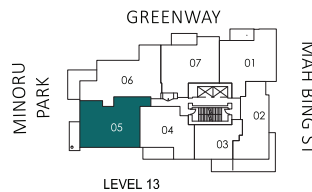
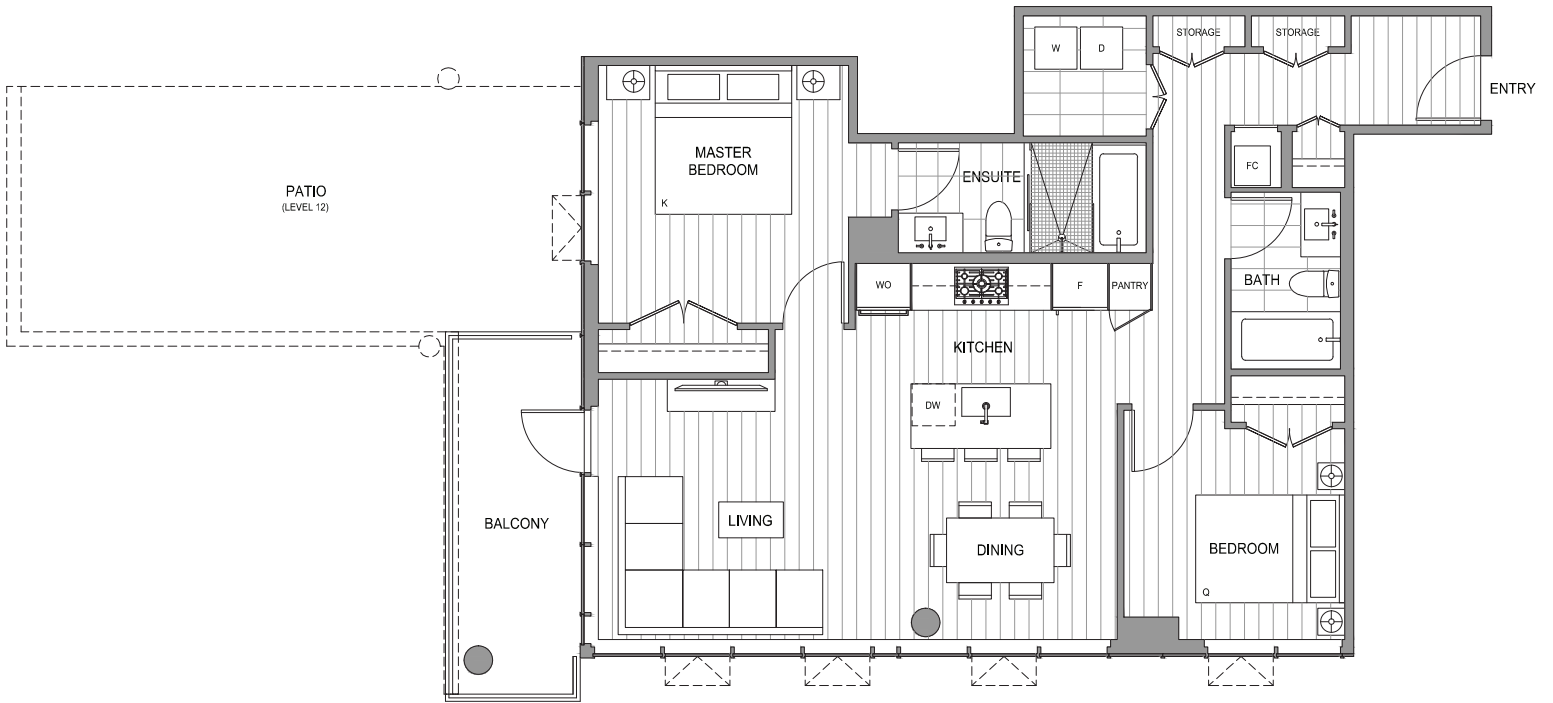
PLAN

2 BEDROOM + 2 BATH

B8

INTERIOR 1047 - 1048 SF
TOTAL 1155 - 1434 SF

EXTERIOR 107 - 387 SF



Actual suite interiors, exteriors, views and amenities may be noticeably different than depicted in photographs, illustrations, websites, renderings and models. The developer reserves the right to make modifications and substitutions, and to change brands, sizes, areas, colours, layouts, materials, ceiling heights, features and other specifications, all without prior notification. Furniture, furnishings, window treatments and other decorations and design features may not be included. Such matters are governed by the applicable contract of purchase and sale and the disclosure statement. This is not an offering for sale. Such an offering may only be made after filing a disclosure statement.



PARK RESIDENCES II

TOWER D

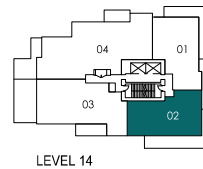
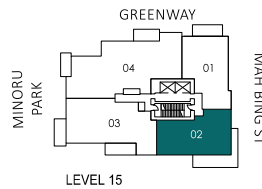
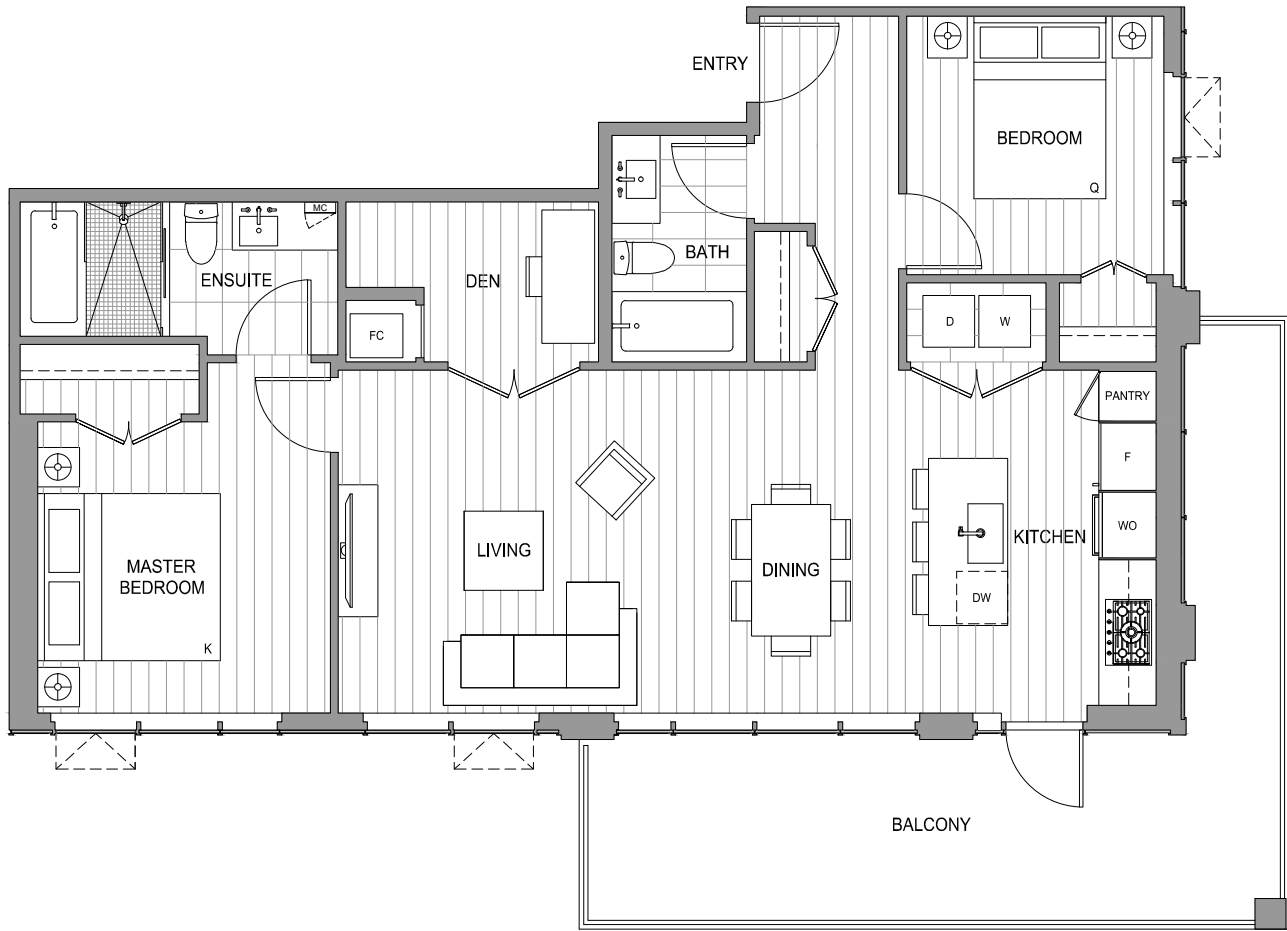
PLAN

BD2

2 BEDROOM + DEN + 2 BATH

INTERIOR 1068 SF EXTERIOR 342 SF

TOTAL 1410 SF



Actual suite interiors, exteriors, views and amenities may be noticeably different than depicted in photographs, illustrations, websites, renderings and models. The developer reserves the right to make modifications and substitutions, and to change brands, sizes, areas, colours, layouts, materials, ceiling heights, features and other specifications, all without prior notification. Furniture, furnishings, window treatments and other decorations and design features may not be included. Such matters are governed by the applicable contract of purchase and sale and the disclosure statement. This is not an offering for sale. Such an offering may only be made after filing a disclosure statement.



PARK RESIDENCES II

TOWER D

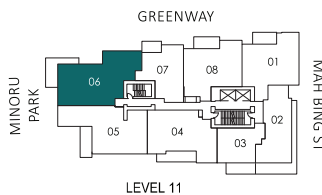
PLAN

BD7

2 BEDROOM + DEN + 2 BATH

INTERIOR 1234 SF EXTERIOR 151 - 174 SF

TOTAL 1385 - 1408 SF



Actual suite interiors, exteriors, views and amenities may be noticeably different than depicted in photographs, illustrations, websites, renderings and models. The developer reserves the right to make modifications and substitutions, and to change brands, sizes, areas, colours, layouts, materials, ceiling heights, features and other specifications, all without prior notification. Furniture, furnishings, window treatments and other decorations and design features may not be included. Such matters are governed by the applicable contract of purchase and sale and the disclosure statement. This is not an offering for sale. Such an offering may only be made after filing a disclosure statement.



PARK RESIDENCES II

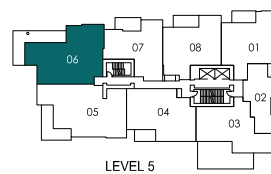
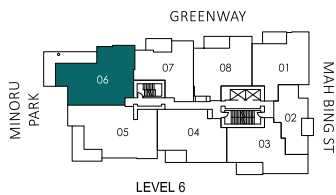
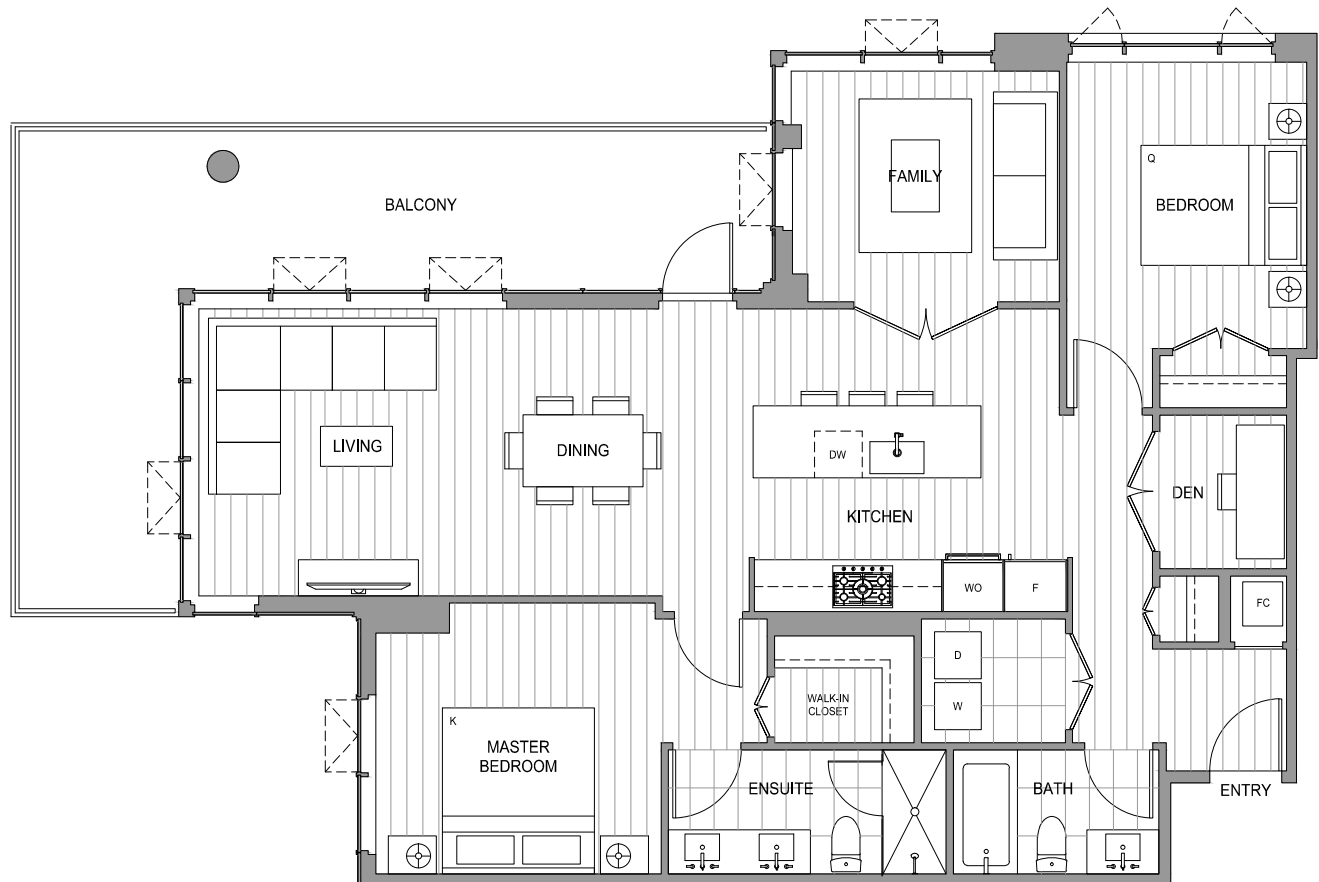
TOWER D

PLAN

BD8

2 BEDROOM + DEN + FAMILY + 2 BATH

INTERIOR 1290 - 1300 SF EXTERIOR 315 - 317 SF
TOTAL 1607 - 1615 SF



Actual suite interiors, exteriors, views and amenities may be noticeably different than depicted in photographs, illustrations, websites, renderings and models. The developer reserves the right to make modifications and substitutions, and to change brands, sizes, areas, colours, layouts, materials, ceiling heights, features and other specifications, all without prior notification. Furniture, furnishings, window treatments and other decorations and design features may not be included. Such matters are governed by the applicable contract of purchase and sale and the disclosure statement. This is not an offering for sale. Such an offering may only be made after filing a disclosure statement.



PARK RESIDENCES II

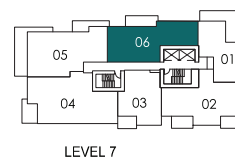
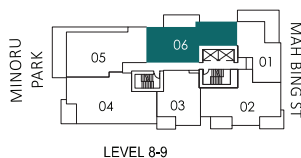
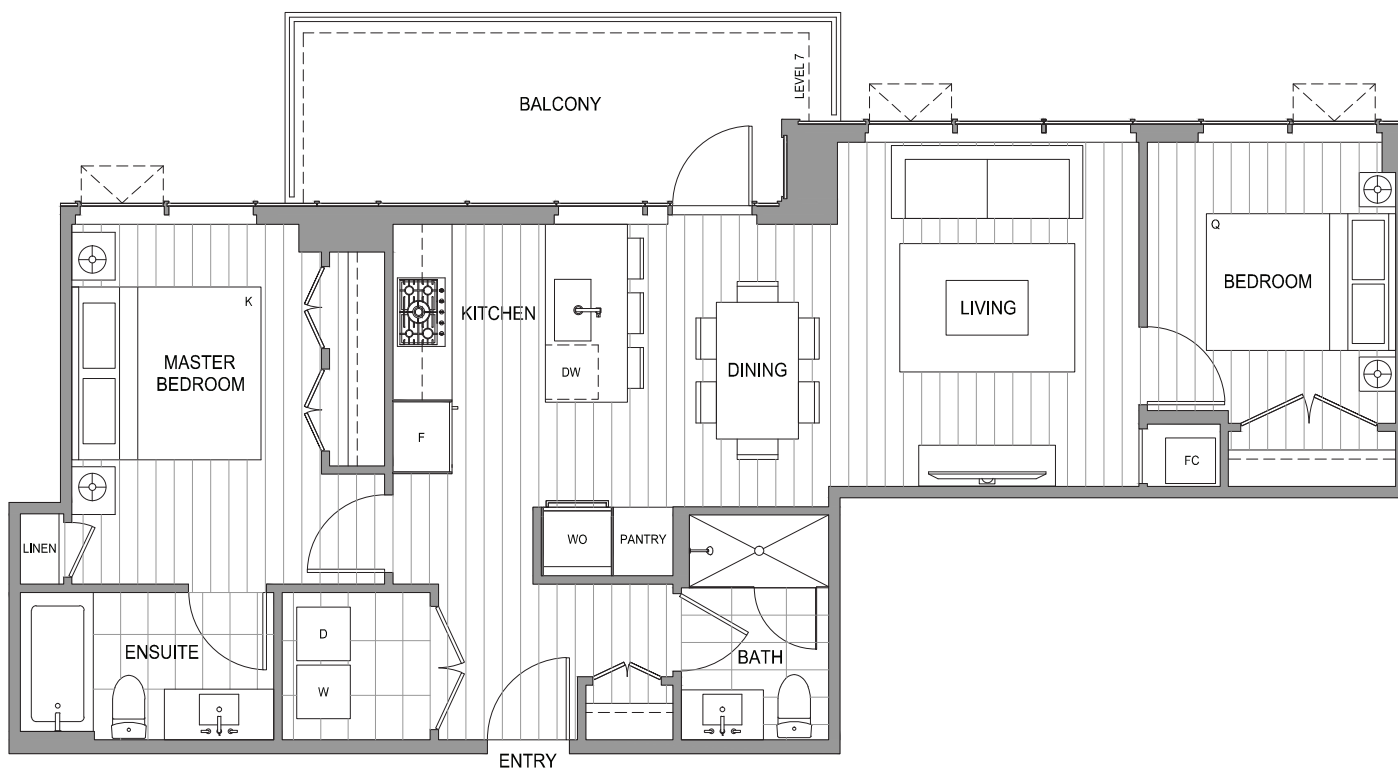
TOWER E

PLAN

B1

2 BEDROOM + 2 BATH

INTERIOR 906 SF EXTERIOR 110 - 134 SF
TOTAL 1016 - 1040 SF



Actual suite interiors, exteriors, views and amenities may be noticeably different than depicted in photographs, illustrations, websites, renderings and models. The developer reserves the right to make modifications and substitutions, and to change brands, sizes, areas, colours, layouts, materials, ceiling heights, features and other specifications, all without prior notification. Furniture, furnishings, window treatments and other decorations and design features may not be included. Such matters are governed by the applicable contract of purchase and sale and the disclosure statement. This is not an offering for sale. Such an offering may only be made after filing a disclosure statement.



PARK RESIDENCES II

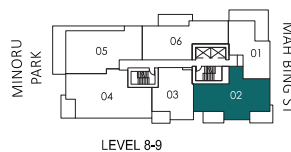
TOWER E

PLAN

B4

2 BEDROOM + 2 BATH

INTERIOR 965 SF EXTERIOR 183 SF
TOTAL 1148 SF



Actual suite interiors, exteriors, views and amenities may be noticeably different than depicted in photographs, illustrations, websites, renderings and models. The developer reserves the right to make modifications and substitutions, and to change brands, sizes, areas, colours, layouts, materials, ceiling heights, features and other specifications, all without prior notification. Furniture, furnishings, window treatments and other decorations and design features may not be included. Such matters are governed by the applicable contract of purchase and sale and the disclosure statement. This is not an offering for sale. Such an offering may only be made after filing a disclosure statement.



PARK RESIDENCES II

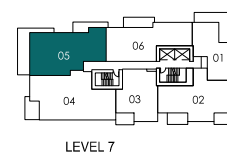
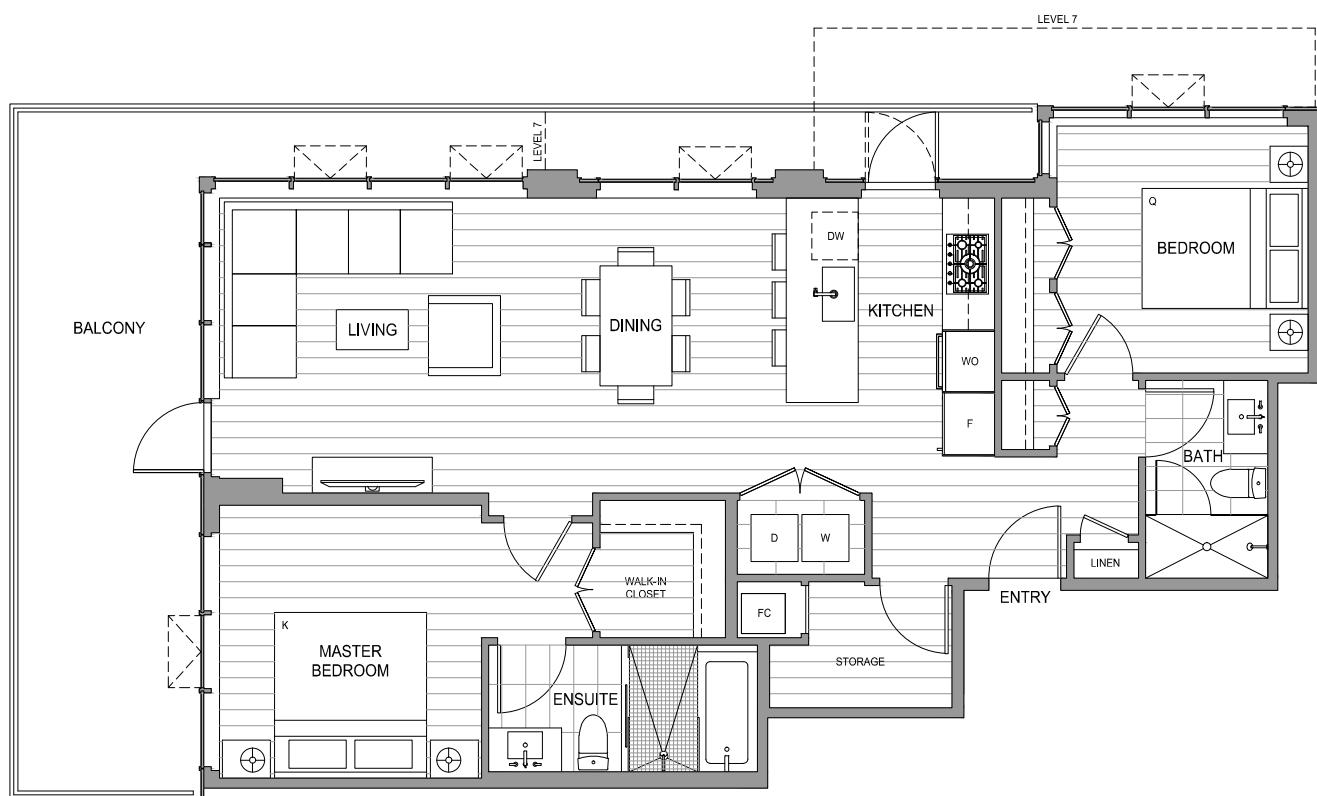
TOWER E

PLAN

B5

2 BEDROOM + 2 BATH

INTERIOR 1061 SF EXTERIOR 331 - 334 SF
TOTAL 1392 - 1395 SF



Actual suite interiors, exteriors, views and amenities may be noticeably different than depicted in photographs, illustrations, websites, renderings and models. The developer reserves the right to make modifications and substitutions, and to change brands, sizes, areas, colours, layouts, materials, ceiling heights, features and other specifications, all without prior notification. Furniture, furnishings, window treatments and other decorations and design features may not be included. Such matters are governed by the applicable contract of purchase and sale and the disclosure statement. This is not an offering for sale. Such an offering may only be made after filing a disclosure statement.



PARK RESIDENCES II

TOWER E

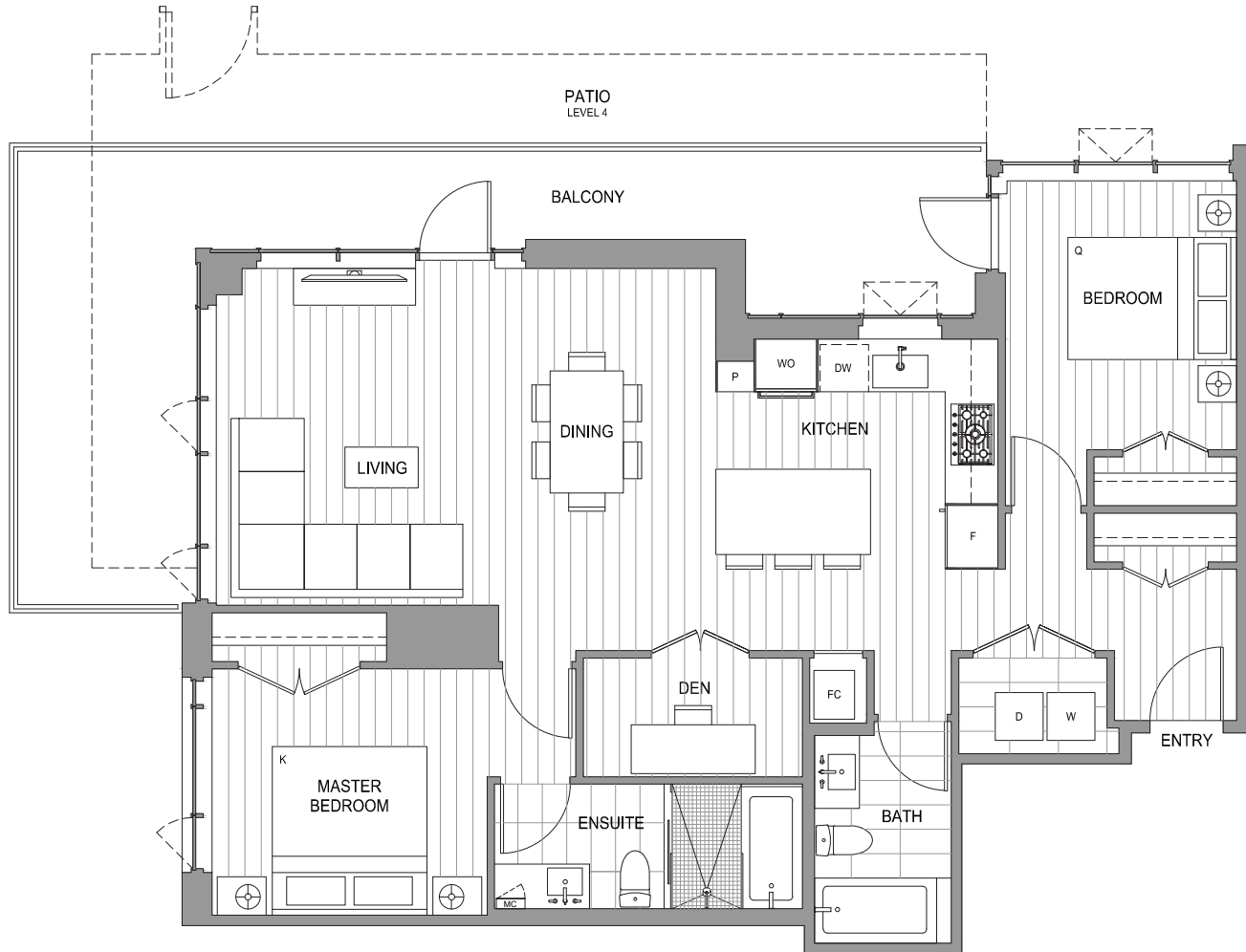
PLAN

BD1

2 BEDROOM + DEN + 2 BATH

INTERIOR 1161 - 1181 SF EXTERIOR 308 - 378 SF

TOTAL 1469 - 1559 SF



Actual suite interiors, exteriors, views and amenities may be noticeably different than depicted in photographs, illustrations, websites, renderings and models. The developer reserves the right to make modifications and substitutions, and to change brands, sizes, areas, colours, layouts, materials, ceiling heights, features and other specifications, all without prior notification. Furniture, furnishings, window treatments and other decorations and design features may not be included. Such matters are governed by the applicable contract of purchase and sale and the disclosure statement. This is not an offering for sale. Such an offering may only be made after filing a disclosure statement.